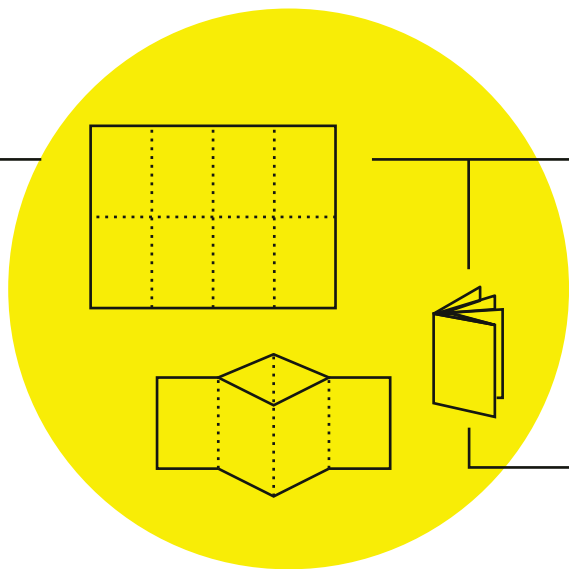


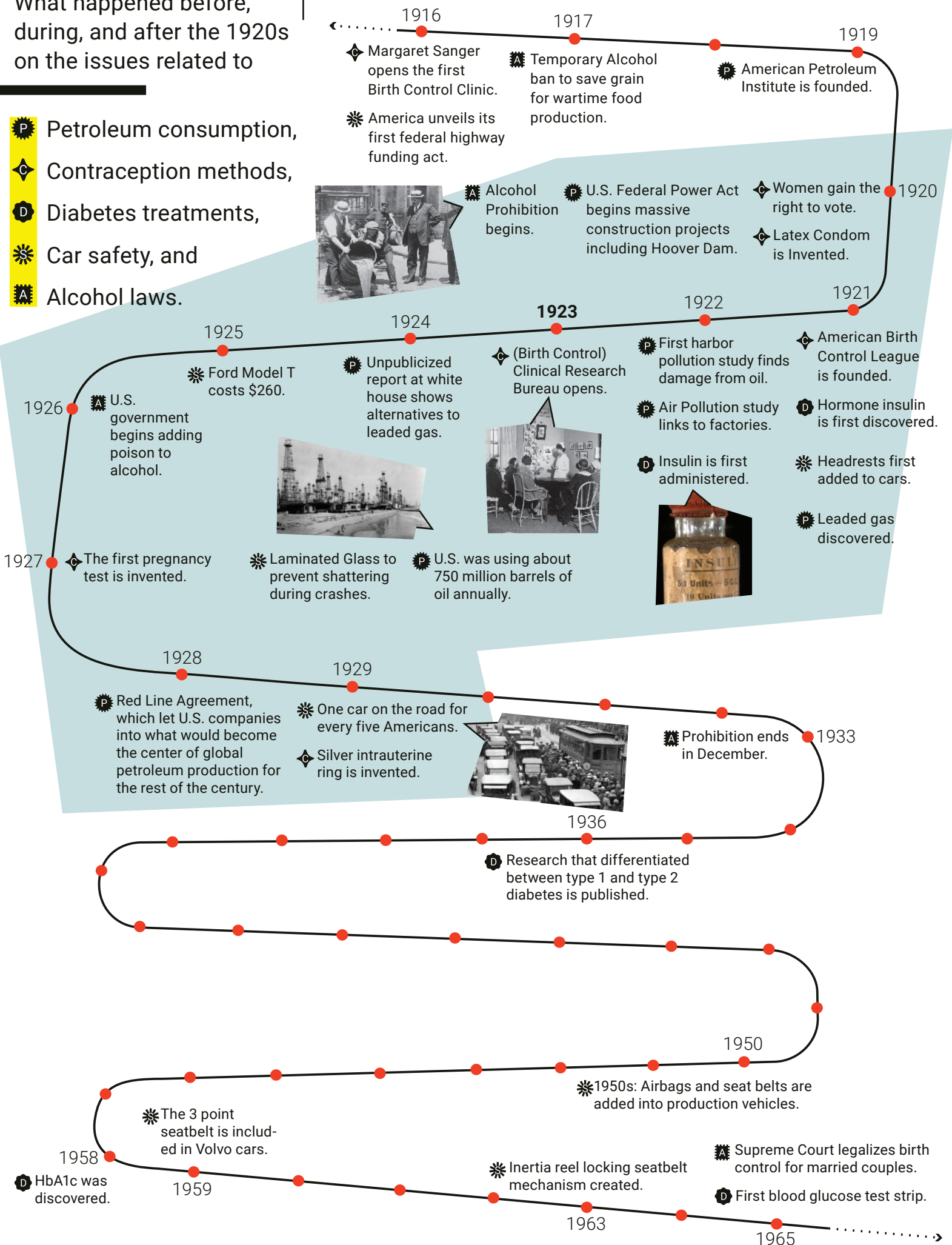
INSPIRING PEOPLE IN 1923 FOR A BETTER FUTURE



a poster-zine for **time travelers**

What happened before, during, and after the 1920s on the issues related to

- P** Petroleum consumption,
- C** Contraception methods,
- D** Diabetes treatments,
- S** Car safety, and
- A** Alcohol laws.



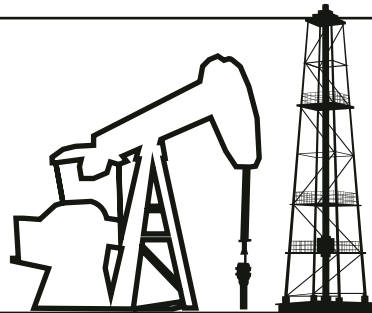
PUMP THE BRAKES ON PETROL

Petroleum is only one of many options to fuel technological advancement.

However, its acquisition and use destroy the environment along the way.

What effect does it have on human and the environment?

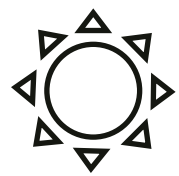
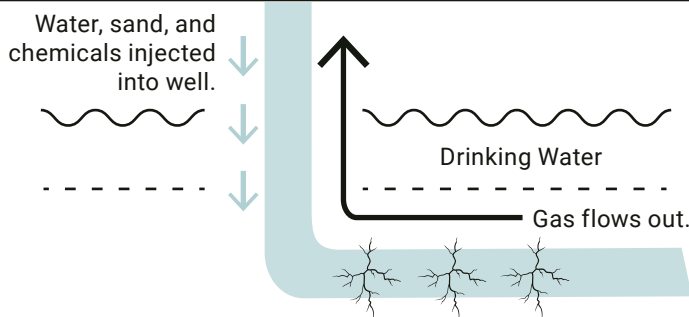
How is petroleum acquired?



Unlined wells can allow harsh chemicals to enter groundwater.

Waste products often **pollute groundwater** and the area nearby.

Drilling + Fracking



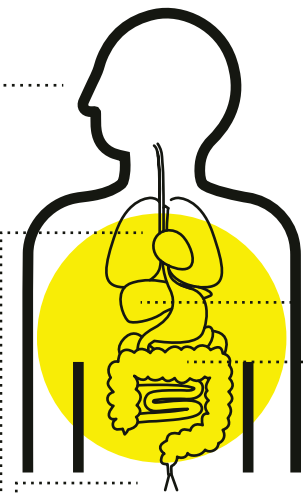
When these compounds combine in the presence of sunlight they create **smog**.

Volatile Organic Compounds
VOCs

Nitrogen Oxides
NOx



Air pollution from petroleum products can have **adverse health effects** on the entire body.



- Eyes & Nose Irritation
- Oral Toxicity
- Inhalation Toxicity
- Liver & Kidney Issues
- Digestion Disorders
- Reproductive Disabilities
- Bone Cancer
- Blood Diseases
- Skin Irritations

Poor handling of the product can lead to **large scale spills** that can have effects lasting over

10 YEARS.

One large scale oil spill can kill:

82,000 birds



25,000 marine mammals



6,000 turtles



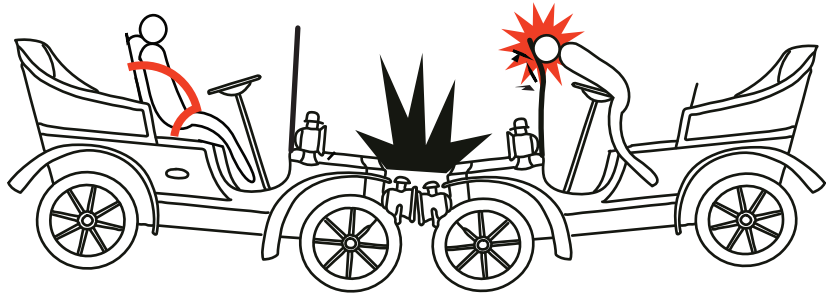
Air pollution attributes to **11.65%** of deaths globally in 2020.



SEATBELT SAVES LIVES

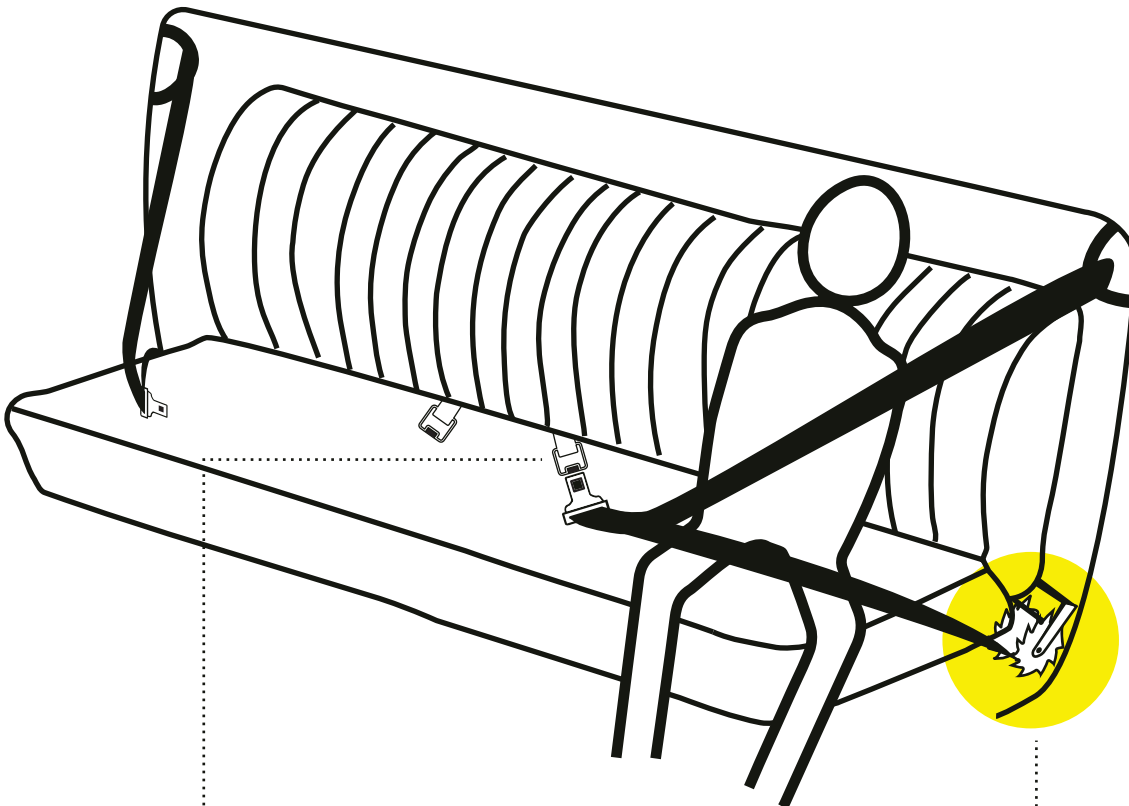
During the first few years after World War I, more Americans were killed in auto accidents than American soldiers were killed in France.

When worn properly seatbelts restrain passengers to their seats during an accident.



With a Seatbelt

Without a Seatbelt



Mount the **retractor** to the floorboard.

Mount the **buckle** latch to the middle of the seat.

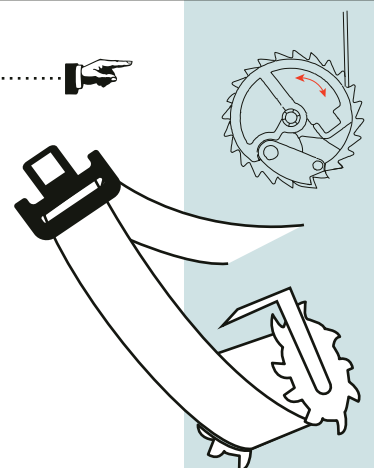
Attach the leather seatbelt to the frame above the seat.

How to properly wear a seatbelt?

Pull the belt over one shoulder and across your lap, ensuring to latch the buckle.

The retractor mechanism is a spring wound gear that the seatbelt is wrapped around. Tension from the spring pulls the seatbelt into the gear holding it tight. When force is applied to the gear, it pushes the locking arm into the spokes of the gear locking it in place.

How to install seatbelts in your vehicle?



CONTRACEPTION METHODS

The family planning movement started as a movement **by women for women.**

Women's perspectives and women's concerns should guide the future of contraceptive development.

Contraception is saving lives from:

- the hazards of unwanted pregnancy.
- infant and child survival.
- sexually-transmitted diseases.

What contraception options do women have access to in the '20s?

DIAPHRAGM

87% effective



The diaphragm is a shallow, bendable cup inserted into vagina to cover the cervix during sex, preventing sperm from entering the uterus.

To insert, bend the soft silicone cup in half, and insert deep into the vagina.

- If you feel your diaphragm shift at all during sex, take a break to adjust, reinsert, or add more spermicide.

SPERMICIDE

79% effective



Spermicide is a chemical contraceptive method that is put into the vagina before sex to stop sperm from reaching an egg, preventing conception.

Spermicide can be purchased over-the-counter at most drugstores, pharmacies, and superstores.

- Always check to make sure that your spermicide has not expired before use. Most spermicides are only effective for 1 hour after first use.

CONDOM

87% effective



The condom is a thin, latex or plastic pouch that is worn on the penis during sex. Condoms are effective for both contraception and prevention of disease.

Condoms are more effective when used with another contraceptive method.

- Wearing two condoms is not an effective contraceptive method, as the friction can lead to tears in the condom.

THE WITHDRAWAL METHOD

78% effective



The withdrawal method involves removing, or pulling the penis out of the vagina, before ejaculation, preventing semen from entering the vagina.

- The withdrawal method is much more effective when used in conjunction with another contraceptive method, such as the condom or the diaphragm.



DIABETES WHAT IT IS AND HOW TO LIVE WITH IT.



Glucose is a sugar that is in most food we eat.

Increasing your intake of **glucose-filled-food** will cause the amount of sugar in your blood (**blood sugar**) to increase.



Insulin, a hormone made by the pancreas, acts as a key to unlock body cell and let in glucose.

When Glucose enters cells, cells turn glucose into energy.



The insulin in your body is either missing or doesn't work.

Insulin now works as a medication that you must take at regular intervals in small amounts.

It is recommended that you take **around 1 mL about every hour** if you are neither too active nor too sedentary.

Symptoms of Low Blood Sugar

Seen:

- Looks pale
- Shaking
- Irritable
- Sweating
- Anxious
- Incoherent
- Slurred speech
- Unable to coordinate movements

Felt:

- Has a headache
- Tingling or feeling numb
- Has a pounding heart
- Weak and tired
- Dizzy
- Nightmares involving the person's death

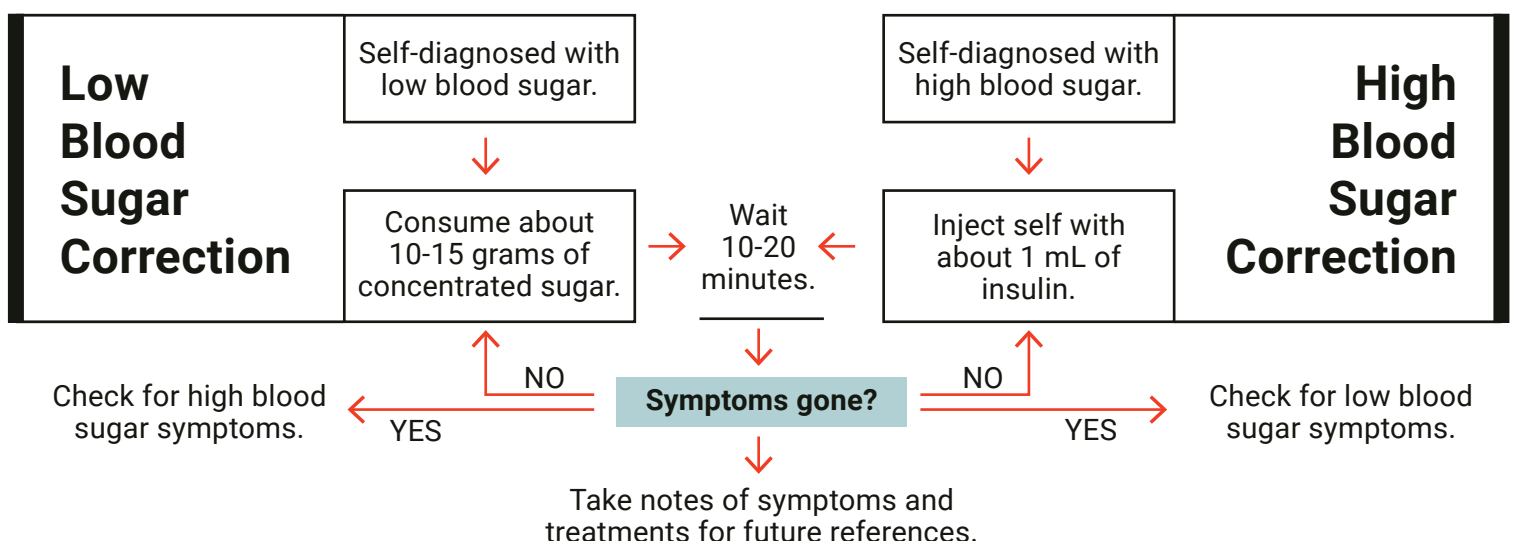
- Extremely hungry or thirsty
- Has blurry, tunnel, or double vision

Symptoms of High Blood Sugar

- Nauseas
- Drowsy
- A need to urinate frequently

Blood sugar symptoms will vary from person to person, be sure to note how you feel when you are high or low so that you can diagnose and treat yourself faster in the future.

You can also check your blood sugar by using **Benedict's Test** to estimate whether you have high blood sugar or low blood sugar.



MAKE AND HIDE ALCOHOL

The Prohibition era encouraged:

The increase of bootlegging (the illegal production and sale of liquor).

The proliferation of speakeasies (illegal drinking spots).

The rise in gang violence and organized crime.



Grapes



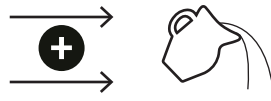
Potatos



Grain



Mashed

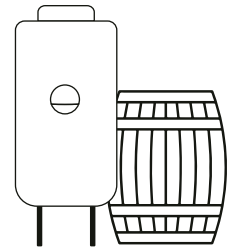


Water



Boiled

Sealed with cheese-cloth and leave to ferment for 2-3 weeks.



Fermented in Container

13%

Average Alcohol Content



WINE



Yeast

Can be concealed by placing a house plant on top. Or disguising as a sourdough starter.

Regular used storage areas are discouraged.

40%

Average Alcohol Content



VODKA

45%

Average Alcohol Content

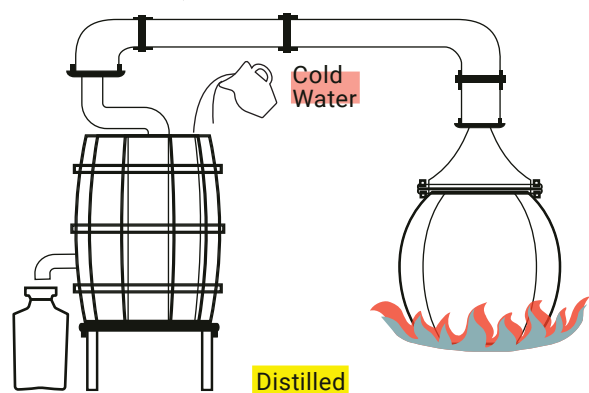


WHISKY

Heated and the "heads" come off first.

Cool water to be added in the pipe and "tails" come off as this gas condenses.

The remaining alcohol placed in the distillator is now safe and ready to drink.

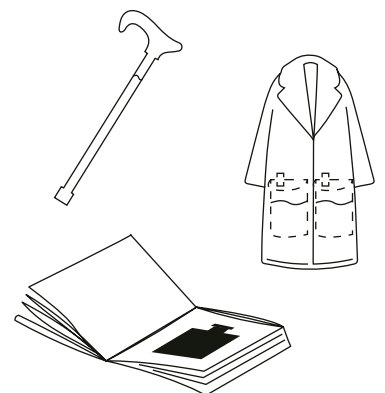


Distilled

While not actively working with distillator, this step is best concealed with teapots on the stove.



Products are best concealed in objects that are used often. As this distracts from suspicion.



This project is made in an Information Design class
at The Ohio State University in Columbus, Ohio USA.
Project duration: October 11 – December 10, 2022

The five topics are chosen by the students in the class.



[Topic] Intended recipients of the information.	Is the original problem completely solved in modern times?	Short-term Goal.	Long-term Goal.
[Petroleum consumption] The general public, exposure to everyone is important for change at this scale.	It has not, more exposure has been achieved, but problems grew faster than solutions.	To start the realization that protection efforts need to start sooner. If the current mentality about the environment showed up decades earlier so much progress would be made.	More thoughtful innovation being sought after. Innovation for progress, not profits.
[Car safety] Car manufacturers who need to produce cars with seat belts. Secondly, car owners need to be influenced to wear their seatbelt.	This problem has expanded in the modern world with the help of electronic safety equipment. Airbags and automatic braking are two examples.	To add seat belts into automobiles and save the lives of people who otherwise would've died in car accidents.	The early emphasis on the safety of cars could lead to earlier car safety technology as well as improved car safety technology in the modern day due to an increased period of advancement.
[Contraception methods] Women of the 1920s who are sexually active.	The problem has expanded, as technology has developed to provide women many more options, but current politics has limited the bodily autonomy of women.	To allow for women of the 1920s to understand and know how to properly use the contraceptive options they have available to them.	Encourage the societal understanding and value of contraception and women's health education, and foster a modern society that values the bodily autonomy of women.
[Diabetes] Newly-diagnosed diabetics as well as their guardians.	The original problem was producing insulin for diabetics. However, modern medicine is still seeking solutions to better prevent and treat diabetes.	To help diabetics of that time period better handle their blood sugar as well as having an idea of what is happening in their system.	Help better spread information about what diabetes is in more simple terms.
[Alcohol laws] People trying to have access to their own personal supply of alcohol.	The original problem has since been solved as alcohol is now legal and commercialized.	To keep people from being harmed from poisoned and expensive alcohol of the time.	Find enjoyment and connection making their own alcohol.

- [Petroleum consumption] Lead researcher/designer: Chris Holman
- [Car safety] Lead researcher/designer: Ryan Stewart
- [Contraception methods] Lead researcher/designer: Melina Raglin
- [Diabetes] Lead researcher/designer: Morgan Eads
- [Alcohol laws] Lead researcher: Maddie Denman

Instructor and the final editor of the poster-zine: Yvette Shen